



**University of
Sunderland**

Ritson, Amanda (2013) *The Social: Encountering Photography*.
The Social Encountering Photography Festival, 16 Oct - 15 Nov
2013, Various venues in Sunderland and the wider North East.

Downloaded from: <http://sure.sunderland.ac.uk/id/eprint/18743/>

Usage guidelines

Please refer to the usage guidelines at
<http://sure.sunderland.ac.uk/policies.html> or alternatively contact
sure@sunderland.ac.uk.



THE SOCIAL:
ENCOUNTERING PHOTOGRAPHY

**A month of photography in
Sunderland and North East England
18 October - 16 November 2013**

Date	Time	Event	Venue	Location	Cost	Page
17 Oct	6 - 8pm	Exhibition Preview: Sarah Pickering <i>Aim and Fire</i> and Louise Taylor <i>Shoot!</i>	Durham Art Gallery	Durham	FREE	12 / 22
18 Oct	5 - 9pm	Sunderland Exhibition Previews and <i>The Social</i> at Independent from 9pm	Priestman Gallery, NGCA, NGC, Sunderland Museum & Winter Gardens, Pop Recs Ltd, Independent	Sunderland	FREE	Various
19 Oct	10 - 1pm	Teachers Tour: <i>You are the Company...</i>	NGCA/Sunderland Museum & Winter Gardens	Sunderland	FREE	26
19 Oct	11am - 1pm	City centre walking tour with Simon Roberts and other artists	Meet in Sunderland Museum foyer	Sunderland	FREE	26
19 Oct	1 - 1.30pm	Exhibition tour: <i>You are the Company...</i> with curator Alistair Robinson	NGCA, Third floor, City Library	Sunderland	FREE	10
19 Oct	1.30 - 2pm	Exhibition tour: <i>ou are the Company...</i> with curator Alistair Robinson	Sunderland Museum & Winter Gardens	Sunderland	FREE	10
19 Oct	1 - 3pm	Exhibition Preview: Damien Wootten <i>Waterside: East Sunderland Photographic Residency</i>	Holy Trinity Church	Sunderland	FREE	12
19 Oct	3 - 4pm	Exhibition Tour and Talk: <i>The (Post) Colonial Photostudio II</i> with Curator Alex Supartono and artists	NGCA Project Space	Sunderland	FREE	11
19 Oct	2 - 4pm	Exhibition Preview and Talk: <i>Homelands</i> with Paul Alexander Knox and Clara Leeming	Side Gallery	Newcastle	FREE	14
21 Oct	3 - 4 pm	Artist Talk: Ingrid Pollard	Sunderland Minster	Sunderland	FREE	13
22 Oct	Flexible	Portfolio Reviews with Alistair Robinson, Alex Supartono and Ingrid Pollard	Northern Centre of Photography	Sunderland	£15	26
23 Oct	2 - 4pm	Artist Talk: Melanie Manchof, in collaboration with Great North Run Culture	Northumbria University Lipman Building	Newcastle	FREE	28
24 Oct	6 - 8pm	Artist Talk: Michele Allen	Arts Centre Washington	Washington	FREE	23
25 Oct	6 - 8pm	Exhibition Previews: <i>Precious Little Diamond: Treasure Hunters</i> / Gillian Gilbert	NewBridge Project/PH Space	Newcastle	FREE	15
26 Oct	11am - 1pm	Walking Tour: Open Air Exhibitions and installations	Meet in Sunderland Museum Foyer	Sunderland	FREE	26
28 Oct	10am - 3pm	Family Activity: Camera Obscura	Sunderland Museum & Winter Gardens/Mowbray Park	Sunderland	FREE	26
28 Oct	4 - 5pm	Exhibition opening: <i>What Does Your Sunderland Look Like?</i>	The Bridges Shopping Centre	Sunderland	FREE	25
29 Oct	10am - 4pm	Family Activity: Pop-up photo studio	NGCA, Drawing Room	Sunderland	FREE	26
30 Oct	11am - 12.30pm, 1.30 - 3pm	Family Activity: Pop-up photo studio	Sunderland Museum & Winter Gardens	Sunderland	FREE	26
31 Oct	10am - 4pm	Family Activity: Pop-up photo studio: Zombie Booth	NGCA, Drawing Room	Sunderland	FREE	26
1 Nov	5 - 7pm	Exhibition reception: Mimeses North	Design Centre Gallery	Sunderland	FREE	29
1 Nov	6.30 - 9pm	<i>Widened Periskop</i>	Sunderland Minster	Sunderland	FREE	25
2 Nov	10am - 12pm	Exhibition Talk and Tour: Damien Wootten, <i>Waterside: East Sunderland Photographic Residency</i>	Holy Trinity Church	Sunderland	FREE	12
4 Nov	5.30 - 7pm	Artist Talk by Harry Hall	Sunderland Minster	Sunderland	FREE	20
6 Nov	6 - 8pm	Artist and Curator Talk: <i>Precious Little Diamond</i>	NewBridge Project	Newcastle	FREE	15
8 Nov	1.30 - 5pm	Seminar: <i>Nobody told us about it: Socialising Photo-History</i>	NGCA, Education Room	Sunderland	£10 / £5	24
8 Nov	7 - 9pm	In conversation event: Marjolaine Ryley with Taj Forer	Sunderland Minster	Sunderland	FREE	13
9 Nov	11am - 1pm	Walking Tour: Open Air Exhibitions and installations	Meet in Sunderland Museum Foyer	Sunderland	FREE	26
9 Nov	11am - 1pm	Artist Talk: Sarah Pickering in collaboration with Contemporary Art Society	Durham Art Gallery	Durham	FREE	12
9 Nov	3 - 5pm	Portfolio Reviews with Sarah Pickering, Marjolaine Ryley and Taj Forer	NewBridge Project	Newcastle	£15	26
11 Nov	6 - 8pm	Exhibition Preview: <i>Deleting Memory</i> by Tia Salina and Irwan Ahmett	Pop Recs Ltd	Sunderland	FREE	9
14 Nov	3 - 5pm	Artist Talk: Shahidul Alam	Priestman Gallery	Sunderland	FREE	11
14 Nov	7 - 9pm	Social Networking (Old School Style!)	Independent	Sunderland	FREE	25
15 Nov	11am - 1pm	Mark Henderson, Residency event	Steels Social Club	Sunderland	FREE	22

The Social: encountering photography

Welcome to *The Social: encountering photography*, a month long international celebration of photography across the North East of England from 18 October - 16 November 2013. *The Social* is an initiative of the North East Photography Network (NEPN) in partnership with the Northern Gallery for Contemporary Art, Sunderland.

We are delighted to be working with an array of photographers and artists from around the world to create a dynamic exchange of photographic practices and experimentation, embracing varied social contexts and activities. Throughout our four-week programme of exhibitions, talks, tours and debates, *The Social* will provide new opportunities for audiences to engage with high quality lens-based practice in ways that are accessible and relevant. *The Social* aims to create an internationally significant platform for regionally based photographers to showcase their work and will also bring artists and curators of international stature to the region to work alongside.

Sunderland is the creative hub of *The Social*, with important new partnerships at the Northern Centre of Photography, University of Sunderland, Sunderland Museum & Winter Gardens, The Bridges Shopping Centre, Sunderland Minster and the National Glass Centre. In extending the reach of *The Social* across the region, we are also delighted to be working with Durham Art Gallery, Side Gallery, The NewBridge Project and PH Space in Newcastle, as well as Arts Centre Washington amongst others.

The Social is committed to the development of a vibrant creative context for photography in the region, through supporting artists to produce and exhibit new work. Key to this philosophy has been the continued support of Arts Council England and the University of Sunderland. Artists premiering newly commissioned works during *The Social* include: Irwan Ahmett and Tita Salina; Craig Ames; John Kippin; Sarah Pickering; Simon Roberts and Stuart Whippis.

We are also pleased to be showcasing the work of a number of emerging and established photographers who were selected through an international open call, enabling selected artists to bring existing work to the region or new work to completion: Chris Harrison; Gillian Gilbert; Michele Allen; Ananda van der Pluijm; Brenda Burrell; Daniele Sambo; Juliet Chenery-Robson; David Bate; Peter Fryer; Harry Hall; Karen Ward; Louise Taylor; Mark Henderson; Aaron Guy; Arabella Plouviez; and Paul Alexander Knox.

Venues across the region include contemporary group and solo exhibitions showcasing work by established as well as emerging artists. Key exhibitions for *The Social* include *You are the Company in Which You Keep (parts 1 and 2)* at Northern Gallery for Contemporary Art and Sunderland Museum and Winter Gardens. Curated by Alistair Robinson in collaboration with NEPN, *You are the Company* brings the two neighbouring venues together for the first time in a joint exhibition that explores some of the ways in which photographers and artists map out our new social networks.

In parallel and as a complement to the venue-based exhibitions, *The Social* also incorporates various public contexts and sites that enable different forms of social engagement with new projects: in metro stations, at Sunderland Minster and the city's Bridges shopping centre. Large-scale photographic installations can also be encountered on windows at the National Glass Centre and The Bridges car-park, on the façade of Sunderland's old fire station and on a number of advertising sites around the city centre.

The Social: encountering photography is programmed by Carol McKay and Amanda Ritson of NEPN in partnership with Alistair Robinson, curator at Northern Gallery for Contemporary Art, Sunderland.

We would like to extend our sincere thanks to participating photographers, partners, funders, colleagues at the Northern Centre of Photography and our exceptional crew of volunteers.

www.thesocialnepn.co.uk

Produced by



Supported by



Programme Partners



The Social Commissions - new projects commissioned specially for *The Social: encountering photography*



Simon Roberts - *The Social: landscapes of leisure*

Extending his exploration of the English social landscape, Simon Roberts has worked on a major commission for *The Social: encountering photography*. A series of large-scale colour photographs, made in various locations throughout Sunderland, are sited in different gallery and public contexts: in the foyer of Northern Gallery for Contemporary Art, on the rear façade of Sunderland Museum & Winter Gardens, In The Bridges shopping centre as well as on the platform at Newcastle Central metro station. The photographs are echoing familiar, yet also distanced. As in the traditions of large-scale history painting that inform them, we encounter highly socialized and deliberately lyrical environments.

Yet these are thoroughly contemporary landscapes, where ordinary people get on with their various activities and pursuits. Some of these are solitary - taking the dog for a walk, or lost in reverie on a park bench. But most of all these are sociable and socialized environments, full of activity. To some viewers the locations will be immediately recognizable, while for many others the ways in which people use and inhabit the spaces - having a picnic, flying a kite, playing football or cycling - provide the more immediate points of connection. As in many of Simon's projects, themes of memory and identity attach to the otherwise ordinary past-times and vistas. The relationships between people and places create a rich tapestry of social observation, while the high and often distant vantage points give a sense of the contemporary existence of each different landscape, as well as the accretions of historical use, social transformation and reinvention.

18 Oct - 16 Nov 2013

Exhibition Preview:
18 Oct 2013, 6 - 9pm

City Library and Arts Centre,
Fawcett Street, Sunderland,
SR1 1RE

Sunderland Museum and Winter
Gardens (External Installation),
Burdon Road, Sunderland,
SR1 1PP
[www.twmuseums.org.uk/
sunderland](http://www.twmuseums.org.uk/sunderland)

Newcastle Central Metro Station,
Newcastle upon Tyne, NE1 5DL

www.simoncroberts.com



John Kippin - *Ships That Pass*



18 Oct - 16 Nov 2013

Exhibition Preview:
18 Oct 2013 5 - 7pm

National Glass
Centre, Liberty Way,
Sunderland, SR6 0GL
www.nationalglasscentre.com

www.johnkippin.com

Ships that Pass, a new photographic installation for the windows of the National Glass Centre references the River Wear and the sense of purpose it achieved in over 600 years of making ships of every kind for the world. It also celebrates the model making of Fred Gooch (a one time employee of Sunderland Shipbuilders) who is responsible for constructing the model ships depicted here. A reminder of the scale and intensity of shipbuilding activity once pre-eminent in Sunderland before its hasty demise, it celebrates its achievements whilst reflecting on the surrounding environmental and cultural legacy. It is also a work that considers where culture lies in the popular imagination and for whom.

"Looking out towards the River Wear from the National Glass Centre it is difficult to imagine the scale of shipbuilding activity undertaken on this now calm and seemingly implacable river. From its position as the largest shipbuilding town in the world, Sunderland has struggled to find a sense of identity and purpose to replace its historic achievements in mining and shipbuilding.

The £45 million aid package granted by the E.U. and negotiated by the (Conservative) government of the day, led by Margaret Thatcher has provided relatively few employment alternatives to major industries, such as building ships and it is difficult to imagine a way in which the (admittedly difficult) world trading and manufacturing environment could have been addressed with less sensitivity to the local workforce and overall regional context.

The legacy of a move from an economy based on manufacturing and extraction to one based on the financial and service sector has proved itself inadequate in the task of providing an acceptable level of employment that is capable of supporting families, and has cemented a damaging north/ south divide that continues to widen. The current Government is scarcely represented in the North of England and is totally excluded from north of the nearby Scottish border, they have continued to pursue economic policies mostly focused on the already overstressed South of England and have neglected developments in other parts of Britain.

The recent discussions about independence in Scotland are a serious reflection of how the British people and increasingly those who live away from the pull of London, truly feel about how inclusive and representative our government really is. We all know that we are 'in it' but not that we are 'in it together'." John Kippin, 2013

Craig Ames - *Other Theatres (2013)*



Showing as part of *You Are the Company in Which You Keep (Part 1)*

Northern Gallery for Contemporary Art, City Library
and Arts Centre, Fawcett Street, Sunderland, SR1 1RE
www.ngca.co.uk

Commissioned by NEPN and Northern Gallery for Contemporary Art, and supported by Arts Council England through Grants For The Arts.

Other Theatres is a multimedia installation of related works concerned with the commodification of contemporary warfare, the pursuit of varying forms of simulated combat by different social groups as a leisure activity, and the application of immersive digital environments by military institutions to drive recruitment initiatives. Alongside this, the collective works also serve to draw attention to the inevitable separation between the virtual combat experience and the actual reality of conflict.

The installation consists of three pieces of work, plus supporting elements. The first piece, *Modern Warfare* is an audio/visual projection that utilises screen recordings of digitally simulated multiplayer combat missions created by members of the on-line gaming community using various military simulation software programmes. Posted on forums and shared with a growing number of first-person simulation gaming enthusiasts, the scenarios are often based upon, or inspired by, contemporary conflict in Iraq and Afghanistan. Working in collaboration with a British Army veteran, the visual accounts of these multiplayer activities are constructed around the spoken testimonial of one soldier's traumatic account of war.

The second body of work, *Kill Zones* is a series of photographic works of 'Mil-Sim' (airsoft military simulation) gameplay arenas in the UK. Unlike paintballing, Mil-Sim players are fundamentally concerned with recreating an 'authentic' combat experience, achieved, in part, by the use of replica weapons that fire 6mm plastic ball-bearings at high velocity. *Kill Zones* explores the growing global phenomenon of Mil-Sim, its fluidic relationship with reality and fantasy and how, in turn, pockets of the British landscape have been subjugated and transformed in order to become metaphysical theatres of recreational conflict. Presented in LED lightboxes, the images are exhibited alongside a highly detailed replica of a British Army SA80 assault rifle, as used by members of the airsoft community.

The final piece of work, *Next Gen: the Battle for Hearts and Minds* is a one-off interactive, e-book that re-presents appropriated material sourced on-line from various US military websites and web-based recruitment campaigns and enrolment initiatives. Accessed via a touchscreen tablet, the multimedia work offers a rich, interactive parody of the US military's current recruitment campaigns - strategies that have been developed to appeal and engage their target demographic: technically savvy, video game playing teenage boys.

Stuart Whipps - *Recorded Amendments: The Carboniferous Epoch*



Showing as part of *You Are the Company in Which You Keep (Part 1)*

Northern Gallery for Contemporary Art, City Library and Arts Centre, Fawcett Street, Sunderland, SR1 1RE
www.ngca.co.uk

www.stuartwhipps.com

Commissioned by NEPN and Northern Gallery for Contemporary Art, and supported by Arts Council England through Grants For The Arts.

Stuart Whipps' new video commission *Recorded Amendments: The Carboniferous Epoch* (2013) examines how Britain's new towns – built during the optimism of post-war Britain – have become landscapes of either mass consumption or high unemployment in a single generation.

Irwan Ahmett and Tita Salina - *Deleting Memory*



11 - 24 Nov 2013

Special event: 11 Nov 2013, 6 - 8pm
All welcome, no booking required

Pop Recs Ltd, 51 Fawcett Street, Sunderland, SR1 1RS
www.poprecsltd.com

www.titasalina.com
www.irwanahmett.com/en

Supported by the Ford Foundation and NEPN.

In their new project *Deleting Memory* commissioned for *The Social: encountering photography*, Indonesian-based artists Irwan Ahmett and Tita Salina set out to explore the relationship between the city and its citizens. Using photography as their primary device, they seek to uncover and playfully intervene in everyday patterns of memory. As visitors to Sunderland, they will be inviting others to work with them in a process of swapping and deleting photographic memories of the city. Sunderland with its industrial and maritime heritage provides a rich context for such creative photographic exchange.

City in Memory

Cities give concrete form to human visions of living. The historical and industrial ambitions of many cities are today transforming, changing the character of places like Sunderland afresh. Such transformations are seen as necessary, ensuring the ongoing vitality of the city. At the same time, a certain balance is necessary, the maintaining of a sustainable relationship, an ecosystem conducive to the experience of citizens. Memory is an essential element in understanding and reconstructing stories, signs and details of any city. But what is the relationship between personal and collective memory? Which memories last and endure and how do memories change?

Limitation

Digital cameras and phones have fundamentally changed the ways in which we record and remember. It seems photography in the digital era is limitless. Everything seems possible and photographs are everywhere. Ordinary teenagers take more photographs than many professionals. Yet, the value and meaning of photographs seems in decline: as in economics, the more abundant the object, the less it is worth. *Deleting Memory* will respond to this situation by reversing it, through the imposed limitation of digital storage capacity. Imposed limitations and restrictions make things crucial!

Delete first before shooting!

This activity is a participatory project that seeks to explore a city in transformation from the individual perspective of everyone involved. The process will start with the artists selecting 10 photographs of Sunderland landmarks. Their selection will be based on their on-line research and their short time as visitors to the city. These 10 images will be saved on a memory card. Participants will then be given instructions to replace these preloaded images with new images of their own that seem more representative of their point of view and experience as citizens. They will be asked to carefully consider before deleting and replacing the existing images. Once deleted, the erased images are gone from memory (card) and this process will deliberately provoke some personal tensions. The aim of *Deleting Memory* challenges citizen photographers to relook at their city, giving everyone decision-making power through the space/lens of their personal cameras.



You Are The Company In Which You Keep

Craig Ames, Ulf Aminde, Haley Austin, Natasha Caruana, Nick Crowe & Ian Rawlinson, Melanie Friend, Gilbert & George, Julian Germain, Paul Graham, Chris Harrison, Nigel Henderson, Jeremy Hutchison, Yee I-Lann, Bob Jardine, James O Jenkins, Linder, *Melanie Manhot, Daniel Meadows, Gustav Metzger, Tim Mitchell, Martin Parr, Reynold Reynolds, Reynold Reynolds with Patrick Jolley, Simon Roberts, Thiago Rocha Pitta, Daniele Sambo, Jo Spence, John Stezaker, Homer Sykes, Stuart Whipps

You Are The Company In Which You Keep reveals the diverse ways in which photographers and artists using lens-based media have created images that map out our new social networks – observing the patterns which structure our social existence, or forecasting what the twenty-first century has yet to bring. Many of the artists might be described as working in anthropological or ethnographic ways, observing how our experience of the world is mediated through the camera lens, and asking how far photographic images structure our imagination. They ask: in the twenty-first century, are images the means by which we are socialised, and the means by which we can know ourselves? Do the images that we consume and internalise become the imaginative materials that we are made of?

The exhibition spans the two neighbouring venues of Northern Gallery for Contemporary Art and Sunderland Museum & Winter Gardens, with each examining separate aspects of how photographic images now suffuse every aspect of our lives. At NGCA, more than 20 artists investigate how the neoliberal economics and continuing military muscle of so-called post-industrial countries determine how far the modern world is being shaped. At NGCA we also encounter revisionist views of early bodies of work by now leading figures in the field – including Martin Parr, Nigel Henderson and Paul Graham. Alongside are brand new work by practitioners such as Tim Mitchell, and several major commissions by artists including Stuart Whipps and Craig Ames. At Sunderland Museum & Winter Gardens, seven artists re-examine the ideas of the portrait and portrait studio, reassessing how we present our own image to the world. The exhibition includes work by radical figures of the recent past such as Jo Spence alongside UK premieres of work by emerging artists such as Natasha Caruana and James O Jenkins, and by international figures such as Yee I-Lann, whose work also features in the exhibition *The (Post) Colonial Photo Studio II* in the NGCA Project Space.



28 Sept – 23 Nov 2013

Exhibition Preview: 18 Oct 2013, 6 - 9pm
Curator Tour: 19 Oct 2013, 1 - 2pm

Opening Times: Mon, Wed 9.30am – 7.30pm /
Tue, Thu, Fri 9.30am – 5pm / Sat 9.30am – 4pm /
Closed Sun

Sunderland Museum & Winter Gardens Burdon Road,
Sunderland, SR1 1PP
www.twmuseums.org.uk/sunderland

19 Oct 2013 - 23 Feb 2014

Opening Times: Mon to Sat 10am – 5pm /
Sun 2 - 5pm

Northern Gallery for Contemporary Art, City Library
and Arts Centre, Fawcett Street, Sunderland, SR1 1RE
www.ngca.co.uk

*Borough Road Adshel SR1 1PS, 7 Oct - 17 Nov

Images: Tim Mitchell, from *A Fish out of Water*
Reynold Reynolds, *Burn*



28 Sep - 23 Nov 2013

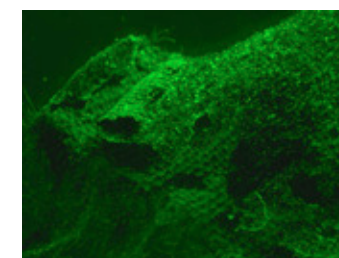
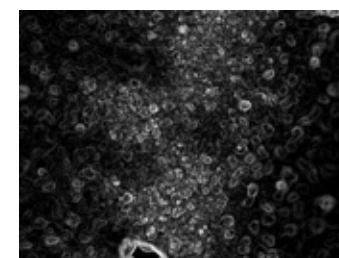
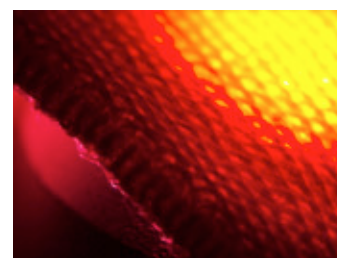
Exhibitions Preview:
18 Oct 2013, 6 - 9pm

Curator and Artist Talk:
19 Oct, 3 - 4pm
All welcome, no booking required

Opening Times:
Mon, Wed 9.30am - 7.30pm /
Tue, Thu, Fri 9.30am - 5pm /
Sat 9.30am - 4pm / Closed Sun

Northern Gallery for
Contemporary Art - Project
Space, City Library and
Arts Centre, Fawcett Street,
Sunderland, SR1 1RE
www.ngca.co.uk

Shahidul Alam and Saydia Gulrukh - Searching for Kalpana Chakma: A Photo-Forensic Study



18 Oct - 16 Nov 2013

Exhibition Preview:
18 Oct 2013, 5 - 7pm

Photographer Talk:
14 Nov 2013, 3 - 5pm

Opening Times:
Mon - Fri 10am - 5pm

Priestman Gallery, University of
Sunderland, First floor, Priestman
Building, Green Terrace,
Sunderland, SR1 3PZ

www.shahidulalam.com

The (Post) Colonial Photo Studio II

Yee I-Lann (Malaysia), Adytama Pranada (Indonesia), Risang Yuwono (Indonesia), Helen Marshall (UK), Dow Wasiksiri (Thailand), Julius E. Muller/Tropenmuseum (NL), Samsul Alam Helal (Bangladesh). Curated by Alexander Supartono (Indonesia / UK)

This exhibition, shown for the first time in the UK, reveals what photography from the cultural history of different former colonies can speak about in our own time. The project brings together contemporary artworks by six international photographic artists with colonial photographs. It juxtaposes works by leading and emerging artists from Thailand, Indonesia, Malaysia, Bangladesh and the UK.

The artists revisit stereotypes from colonial-era portraiture to question their place in their nations' histories and cultures. The exhibition questions how far the photographic studio techniques and practices that developed in the colonial era continue to influence the world of images in what is often described as a 'post-colonial' age. Historical and archival images from the recent past are juxtaposed with 'postcolonial' photographic propositions.

The latter directly or indirectly reference historical styles and ideas, appropriating or subverting their photographic mannerisms, patterns and commonplaces. Curator Alexander Supartono orchestrates these works in a dialectical relationship to reveal what photographic practices from two different ages share and what continuities there are – as well as looking at how they provide different points of departure for understanding the people we encounter in these portraits.

Shahidul Alam is a Bangladeshi photographer, teacher and activist. In 1989, he established *Drik* picture library and *Pathshala: South Asian Institute of Photography* in Dhaka, Bangladesh. He is also director of *Chobi Mela*, the first festival of photography in South Asia. His most recent project has its first UK showing during *The Social: encountering photography* and concerns the 'disappearance' of a leading Bangladeshi women's rights activist. Produced in collaboration with social scientist and activist Saydia Gulrukh, the installation combines photographs, video, interviews and artifacts in a provocative exploration of what evidence comprises.

Kalpana Chakma held the position of General Secretary of the Hill Women's Federation. Along with two of her brothers, she was abducted on 12 June 1996 from her home at Lallyaghona village. Kalpana Chakma is still missing. This innovative installation by Shahidul Alam and Saydia Gulrukh is a powerful reminder of the need for dissenting voices in the face of such 'disappearances'.

Curated by Alexander Supartono.



Sarah Pickering - *Aim and Fire*

Locus+, in partnership with the NEPN and Durham Art Gallery are proud to present *Aim and Fire*, the first solo exhibition of work by Sarah Pickering in the North East. The exhibition includes works from *Explosion, Incident and Fire Scene* as well as *Celestial Objects*, a new commission by Locus+, in partnership with NEPN.

Celestial Objects has been made by photographing a revolver fired in total darkness. Each photographic exposure captures the entirety of a gunshot from start to finish.

The gap between truth and what we understand to be truth is a fascination that runs through Pickering's practice. *Celestial Objects* continues this investigation, referencing images of deep space, cinematic special effects and the skies of Romantic painters such as John Martin, positioning itself between the objective facts of a documentary photograph and imagined reality. Exhibition produced by Sarah Pickering in collaboration with Locus+ and Durham Art Gallery.

Associated event: Portfolio Reviews with Sarah Pickering: Saturday 9 November 2013 at The NewBridge Project, see page 24

Damien Wootten - *Waterside: East Sunderland Photographic Residency*

Throughout 2013, photographer Damien Wootten has been artist in residence with Living History North East at the Regional Centre For Oral History in the East End of Sunderland. Site-specific photographic work produced during the residency is being shown at the adjacent Holy Trinity Church, and a free artists' newspaper accompanies the exhibition and will be available and distributed throughout the run of the exhibition.

During his residency, Wootten has explored photography's role in redefining identities within our own communities, using photography to explore our shared histories and present experiences.

17 Oct 2013 – 12 Jan 2014

Exhibition Preview: 17 Oct 2013, 6 - 8 pm

Artist Talk in partnership with Contemporary Arts Society: 9 Nov 2013, 11am - 1pm / Free, no booking required

Opening Times: open daily 10am -5pm in Oct / 10am - 4pm in Nov - Jan

Admission: £3.70 / £2.70 concessions / £1.70 children *2 for 1 entry with this newspaper*

Durham Art Gallery, Aykley Heads, Durham, DH1 5TU

www.sarahpickering.co.uk



19 Oct – 10 Nov 2013

Exhibition Preview: 19 Oct 1 - 3pm, all welcome

Artist Talk: 2 Nov 10am - 12pm
'Walking Tour' of the exhibition by the artist, this will include a short walk in the East End/Old Sunderland area. To reserve a place for this event please contact damienwootten@gmail.com - places are limited

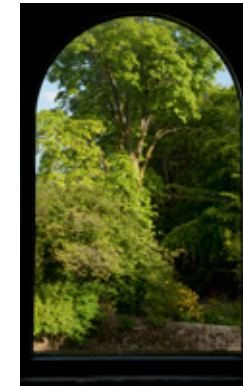
Opening Times: Wed to Sun 11am - 4pm

The Canny Space at Holy Trinity Church,
Church Street East, Sunderland SR1 2BB
www.thecannyspace.co.uk

www.damienwoottenphotography.com

The Social at Sunderland Minster

Sunderland Minster provides the context for a series of talks, slideshow events and exhibitions during *The Social*. Highlights from two newly completed photographic research projects will be exhibited in the Minster nave. For exhibition opening times, please see www.thesocialnepn.co.uk



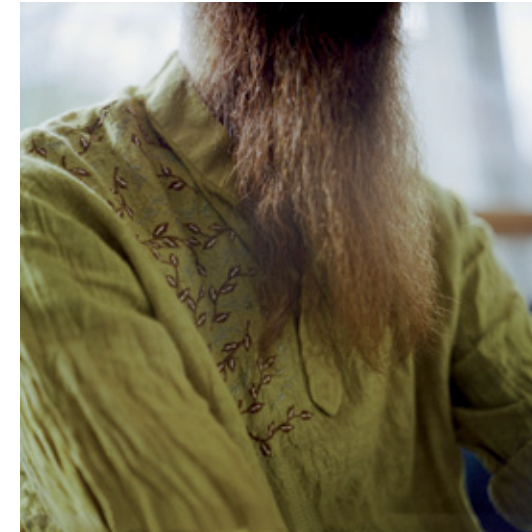
Ingrid Pollard - *Regarding the Frame*

For some four decades, Ingrid Pollard has been exploring the romanticism of the English landscape and its hidden histories in a practice that has encompassed printmaking and drawing as well as photography. Hers is a measured creativity, one in which she recognises the attraction of pastoral tradition, whilst alluding to its exclusions, contradictions and hidden histories. A British-Guyanese artist, she has continually explored relations of the urban and rural, questioning the nature of belonging, and the practices through which identities are constituted. For some time now she has tested and extended this creative practice whilst artist-in-residence at VARC (Visual Arts in Rural Communities), based for a year in the remote Northumberland hills of Highgreen estate in Tarsset. Her approach to artistic research is well suited to such a context, enabling a sustained period of creative fieldwork in which she has observed, walked and talked in and around the locale, often in the company of those who live and work there. A selection of work produced during her year in Northumberland will be exhibited in the Minster nave.

Artist Talk: Ingrid Pollard in conversation with Carol McKay, 21 Oct 2013, 3 - 4.30pm, all welcome

www.ingridpollard.com

Associated event: Portfolio Reviews with Ingrid Pollard: Tuesday 22 October 2013 at Northern Centre of Photography, see page 24



Marjolaine Ryley - *Growing up in the New Age*

Marjolaine's recently published book *Growing up in the New Age* explores the alternative world of the 1960s and early 1970s counterculture, from communes in the South of France, squatting in South London and 'free school' education to the many forays into all things 'New Age' set against the backdrop of social and political happenings of the era. Ryley's autobiographical photographs and texts works have the feel of an Alice in Wonderland psychedelic dream, looking back at the counterculture through the prism of time, recapturing her memories of places, people and events.

The work all uses archival imagery to revisit and understand the past, while the new image and text works explore the duality inherent in much of the 'New Age' and countercultural philosophies, which hope to create both inner and outer states of Utopia.

Artist Talk: Marjolaine Ryley in conversation with curator and publisher Taj Forer from Daylight 8 Nov 2013, 7 - 9pm, booking required - see www.thesocialnepn.co.uk for further details

www.marjolaineryley.co.uk

Associated event: Portfolio Reviews with Marjolaine Ryley: Saturday 9 November 2013 at The NewBridge Project, see page 24

Paul Alexander Knox & Ciara Leeming - *Homelands*

Paul Alexander Knox and Ciara Leeming were commissioned by Side Gallery as part of *Homelands*, a wide-ranging project commissioning photographers to document host/migrant community stories in the North East of England.



19 Oct - 21 Dec 2013

Photographers Talk:

19 Oct, 2 - 4pm

All welcome, no booking required

Opening Times:

Tue to Sat 11am - 5pm /

Thu 11am - 7pm

Side Gallery, 5 - 9 Side,

Newcastle upon Tyne, NE1 3JE

www.amber-online.com/sections/side-gallery

www.ciaraleeming.co.uk

www.paulalexanderknox.com

Side Gallery's *Homelands* commissions have been supported by Arts Council England and Baring Foundation

Paul Alexander Knox - *We Are All Brothers Here - Stories from the Bangladeshi Community in Sunderland*

Growing out of a year documenting the Bangladeshi community rooted in the once industrial centre of Paul's own native Sunderland, what was initially conceived as a small commission grew in scale as the welcome he received opened up a wealth of stories. He began looking at the ways in which members of the 4,000-strong community maintain links to Bangladesh while forging their lives in Britain. He observed the juxtapositions inherent in lives lived in two worlds – the over crowded mosque built into a row of terraced houses, teenagers wearing tracksuit bottoms and the Kurta or ceremonial tunic, and Islamic girls screaming for pop sensation Rax Star.

Drawn to the places where the different communities meet, the points of contact were not always peaceful – an undercurrent of racism bubbling up to the surface during protests against the use of Halal meat at a sandwich shop and against a proposed new mosque. But looking beyond the differences and the similarities, Paul time and again came back to individual stories of the people he met. He spent time in the late night takeaway with the mullah/delivery driver who can recite the Koran by heart but is baffled by the terraced streets of Sunderland. He was invited into the home of Farjana who was 'born, bred, kicked and shouted at in Sunderland' and Mahfuz the Bangladeshi-born man who inhabits six roles in his efforts to maintain his community and support his family. Spending time with people where they live, work and pray he creates a portrait of a complex and rich community.

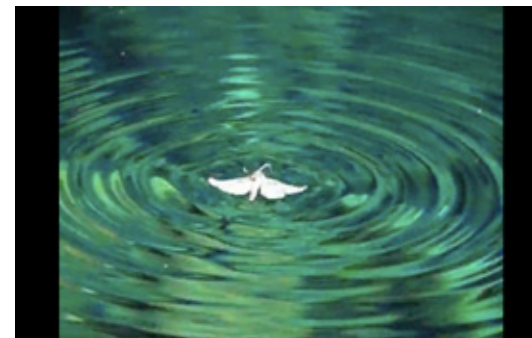
Paul Alexander Knox was also selected through *The Social* open call and his work will be shown on an Adhsel in Sunderland during *The Social*.



Ciara Leeming- *A Roma Family in Middlesbrough*

The exhibition grows out of almost 18 months working with a family from the Czech Republic, who are among thousands of Roma who have moved to the North East since European Union expansion in 2004 and 2007. Post communist economic collapse hit Roma especially hard and they were dealing with stifling institutional racism and a rise in rabid anti-Gypsy far right politics. This commissioned work forms, for Ciara, a strand of a far broader project on Britain's new Roma communities, on which she has worked since 2010.

Regarding her work as a collaboration, from the start she wanted to invest the time and energy to develop the friendships and relationships of trust where a family would feel in control of the way their stories are represented. She spent a lot of time initially, identifying a family that would be open to her approach. Zaneta and Jiri, their children Roman, Jiri, Katerina and Andrea and their extended family were easy-going, warm and welcoming from the start and soon settled into a comfortable routine with the photographer. When she asked if she could join them for Christmas they didn't flinch. She tried to capture moments of beauty and meaning amid the ordinary humdrum of daily life. She looked at how individual family members relate to their environment, on the relationships between members of this solid and close-knit family and interactions with the wider Roma and Middlesbrough communities.



Precious Little Diamond: Photo Treasure Hunters

Aurélien Arbet and Jérémie Egry (NY and Paris); Estelle Hanania (Paris); Olia Sliwczynska (Poland); Peter Sutherland (New York); Nicolas Poillot (Paris); Jim Mangan (US); Bridget Collins (NY); Kuba Ryniewicz (Poland/England)

Precious Little Diamond: Photo Treasure Hunters is an international group exhibition which explores how photographers aim to discover aesthetic 'treasures' through mapping and exploring their surroundings. The show will playfully explore this theme of the photographer and the audience as 'treasure hunters' and has been produced by The NewBridge Project and artist-curator Kuba Ryniewicz.

Just as the artists in the show have searched and gathered their 'treasures', so too visitors are invited to hunt down the exhibits. They will first encounter a printed floor plan and after moving through the gallery space, they will be given a torch and descend into the basement space to discover the photographic treasures.

Curated by Kuba Ryniewicz.

26 Oct – 6 Dec 2013

Exhibition Preview: 25 Oct 2013, 6 - 8 pm

Precious Little Diamond Photographers and Curator Talk: 6 Nov 2013, 6 - 8 pm. All welcome, no booking required

Opening Times: Mon to Sat, 12 - 6pm

The NewBridge Project, 16 New Bridge Street West, Newcastle upon Tyne, NE1 8AW
www.thenewbridgeproject.com

Also showing at The NewBridge Project - PH Space:
Gillian Gilbert - *Walter*

The Social Open Call

The following projects have been selected and supported through an international open call.



Aaron Guy - *Shift*

Shift is a new artists' film which explores historical reference and the necessity of contemporary industrial business set in the landscape of an evolving city. Using the former location of Monkwearmouth Colliery, now the Stadium of Light, home to Sunderland AFC, the film explores changes in the economic and physiological use of landscape for social purposes.

In this, the 20th anniversary year of the closure of the Colliery, the work seeks to create visual connections between the interaction of the club fan base passing through turnstiles and the once 2000 strong workforce clocking on. The feature draws on the mechanics of movement that is pivotal to the daily routine of the former miners and the fans visiting the stadium for home matches.

The artist conducted extensive background research in the photographic and film archives of the North East Mining Institute during a three year photographic and curatorial residency, and will draw on this archival context in editing and presenting the film for public exhibition. An accompanying artists' publication will be distributed to residents in the area and stand as an artwork in its own right.

8 Nov - 6 Dec 2013

City Library and Arts Centre, Fawcett Street, Sunderland, SR1 1RE

The work will also be screened during a home match at the Stadium of Light.

www.aaronguyuk.tumblr.com

Supported by Sunderland Association Football Club, North of England Institute of Mining and Mechanical Engineering, Sunderland City Council and NEPN.



Arabella Plouviez - *Connected and Virus Portraits*

Arabella Plouviez presents two series of portraits that explore issues of identity and community in an increasingly globalised environment. Looking down, shyly away from the camera, the *Connected* series explores the visual contradictions between the introspective pose and the access to all kinds of possibilities through the mobile phone. This work considers the shifts that occur as we engage with a networked world and exclude ourselves from the physical environment in which we are, spending time with those we want to rather than those around us, involved in communities that we select rather than those that we simply find ourselves in because of our physical location.

The series *Virus Portraits* explores other contemporary anxieties: as we hear about epidemics and pandemics which globalisation has enabled to spread with ease, our 'diseases of modernity' such as SARS, avian and swine flu threaten to disrupt our modern world. A common personal response, in the main inadequate, becomes a simple mask, an attempt to separate ourselves from those around us, whilst not being able to do that physically. The photographic portrait traditionally attempts to provide the viewer with an insight into the person who is being photographed. In this work the women portrayed are hidden, challenging the connection between subject and viewer.

18 Oct - 16 Nov 2013

Connected: The Bridges Carpark Rotunda / The Bridges Shopping Centre, Crowtree Road, Sunderland, SR1 3JU

Virus Portraits: Tyne and Wear Metro Stations - Pelaw, Newcastle Central, Sunderland Central

www.arbellaplouviez.co.uk

[16]

Ananda van der Pluijm - *Martin*



18 Oct - 16 Nov 2013

University Boulevard / Sciences Complex, University of Sunderland, Chester Road, Sunderland, SR1 3SD

Daylight viewing recommended

Also showing at University Metro Station

www.anandavanderpluijm.nl

In this award-winning project, Netherlands-based photographer Ananda van der Pluijm focuses on loneliness, a lack of contact and connection with others. Photography to her is the means to make contact with her environment and subjects. She is currently working on several stories within this theme, trying to establish new connections of broken or lost contact.

"I search my childhood-dream of safety and security; a longing to strengthen the vulnerable commitments we engage in. I was travelling in 2007, when I got diagnosed with Guillain- Barré. Housebound by a wheelchair and crutches, I felt like an outsider. During the five years rehabilitation I started photography to reconnect: it's the means to make contact with my environment. In my work I focus on loneliness and lack of connection with others. This project is about my half-brother Martin and what I recognize in him.

After living with his father for ten years and staying in a youth shelter, he returned home two years ago to live with our mother. He arrived with some clothes in a bag, no work or degree. I started to follow him because I didn't recognize him after ten years absence. It was a process of getting to know him again, using the camera to make a new connection.

I recognise a lot of myself in him. His situation is not a big and dramatic story. He has problems, but he's also just teenager who's trying to get his life back in order, and find a place for himself. I've felt like an outsider a long time, and I think many people feel 'disconnected' like that. It's not a subject people like to talk about, and I hope to get the audience to realise that this story is about them too: we all need a sense of belonging, a sense of place. We're very networked with social media, for instance, but we've never been lonelier and more narcissistic in our lives." Ananda van der Pluijm, 2013

[17]

Brenda Burrell - *The Great Fern Street Postcard Mystery*



18 Oct - 16 Nov

Send us a postcard:

c/o Northern Centre of Photography, Chester Road, Sunderland, SR1 3SD

All postcards received will be published on our new website along with the full Fern Street collection

www.fernstreetpostcards.com

Also at Sunderland Museum & Winter Gardens, see www.thesocialnepn.co.uk for details

Brenda Burrell is fascinated by the snapshot, vernacular photography and communication. She collects local postcards from the 1970s and before, and snapshots and family albums showing everyday life in the NE. In this project developed for *The Social* she invites you to send her a postcard - she would love to hear from you.

The project began with her discovery of an intriguing set of 120 picture postcards that were sent to or preserved by one single resident of Fern Street, Sunderland from around the beginning of the 1900s to perhaps the 1930s. On display during *The Social* at Sunderland Museum and on the web, this unique collection is the early 20th text message, the Tweet, the Facebook update of the day, and gives a miniature insight into communication one hundred years ago.

But who was Martin Crosby? He lived at Fern Street - but that's all we know. Do you know who he was? Was he an uncle or grandfather, a marra or Black Cats fan? Did he build ships or dig coal? Was he a teacher or a soldier?

Send us a picture postcard to show us where you are and any clues, real or imagined. Use a real postcard, or if you have a smartphone, take a photograph and use an App. Postcards from Sunderland, and pictures of or around Fern Street will be particularly welcomed.

Apps include Shoot It, bypost, RaceltHome, Postagram but there are several and all possible.

Chris Harrison - *I belong Jarrow*



19 Oct 2013 - 23 Feb 2014
Exhibition Preview: 18 Oct 2013, 7 - 9pm

Showing as part of *You Are the Company in Which You Keep, Part 2*

Sunderland Museum & Winter Gardens, Burdon Road, Sunderland, SR1 1PP

www.chrisharrison.no

Chris Harrison was born and brought up in Jarrow but has lived abroad for many years. The photographs exhibited here explore questions of identity, memory and belonging, and are extracts from his recently published book *I belong Jarrow* (Schilt, 2012)

"My work is not fictional, but neither is it an objective truth. It is highly subjective, coming as it does from an emotional analysis of the world not a rational one. My photographs are of real people and places and nothing including my attachment is constructed. I'm not interested in deconstructing the medium of photography; as a medium I still feel it has something to say. I take pictures of the real world to show what's there, not to critique photography.

My work is based on personal experience not because I feel myself or my life to be special, but because I need to know the subject inside out. I don't learn about the world through photography, I make sense of my knowledge of the world through my practice. This approach of stopping and looking at ordinary things and asking "Why?" is the key to my work. All my work is about Britain, it's not about notions of Britishness. I am interested in the Britain that remains rigidly class-bound and how that has warped everything and always has. At heart I am exploring my own identity, and I hope that because my work is so specific it might help answer more general questions about our society.

There is no irony in this work, I'm a romantic. Irony requires distance, but I want to get as close as possible to my subject. Each essay is a reference point on an imaginary map that I'm using to find my way home." Chris Harrison, 2011

Daniele Sambo - *Sown*



28 Sep - 23 Nov 2013

Exhibition Preview: 18 Oct 2013, 7 - 9pm

Showing as part of *You Are the Company in Which You Keep, Part 1*

Northern Gallery for Contemporary Art, City Library and Arts Centre, Fawcett Street, Sunderland, SR1 1RE

www.ngca.co.uk

www.dansambo.com

An extract from his series *Sown*, Daniele exhibits photographs of temporary light installations in urban wastelands and community gardens. Made in locations across Europe, beginning two years ago in Glasgow, the series entails a set of night cityscapes and creates imaginary spaces out of urban wastelands.

In *Sown* every single photograph represents the effort made by a community to transform their city. The work is an exploration of urban hybrid environments, wastelands where public and private, natural and artificial interact. In between a light installation and a photographic project, the work offers a novel approach to the representation of the everyday.

David Bate - *Indian Notes on Democracy*



18 Oct - 16 Nov 2013

Photographic Installation, Monument Metro Station, Newcastle upon Tyne

www.davidbate.net

David Bate's most recent photographic work has explored issues of globalization and technology. Taken from the series *Indian Notes on Democracy*, and photographed in Delhi, India in February 2013, the aim of this installation is multiple: to disrupt the usual habits of billboard images as the consumption of advertising messages, to disrupt our notions of social space and street culture, and to reflect on perceptions of what the differences are between first and third world street spaces. In this way the pictures enable a direct contrast between the photographic image of a street and an actual street to bring about a different view of 'the street', and reflect upon the local location, culture and environment.

Through humour and curiosity the photowork can challenge a range of (perhaps unpredictable) assumptions we make about our own environment and the preconceptions of what 'other' street environments are like.



26 Oct - 30 Nov 2013

Exhibition Preview: 25 Oct 2013, 6 - 8pm

PH Space, 18 New Bridge Street West, Newcastle upon Tyne, NE1 8AW
www.ph-space.tumblr.com

Gillian Gilbert - Walter

Gillian's photography explores perceptions of identity intertwined with place and history. Use of an old film camera for the *Walter* series reflects a slower pace that allowed the photographer to build a window into a particular way of life. The photographs in this series comprise a narrative portrait of Walter, exploring his chosen way of life and the space he occupies as a woodsman and beekeeper, living and working on the same country estate for 35 years. Walter cares for the land, planting, nurturing and managing the trees in his charge, contributing to the possibility of future generations of traditional rural workers to follow in his footsteps.

In May 2013 Gilbert was awarded the Rob Sara Print Bursary, supported by *Redeye*, *The Photography Network* and the prints in this exhibition were specially produced over a two-day hand printing workshop mentored by expert printer Rob Sara.



18 Oct - 16 Nov 2013

The Old Fire Station, Dun Cow Street, Sunderland, SR1 3HA

www.axisweb.org/seCVP/asp?ARTISTID=14000

Juliet Chenery-Robson - Portraits of a Postmodern Illness

On the façade of Sunderland's Old Fire Station building is *Portraits of a Postmodern Illness* (2013). Part of Juliet-Chenery Robson's on-going photographic exploration of the invisible illness ME, the sitters are presented here as coolly formal but highly individualized portraits. The portraits of ME sufferers with their eyes closed offer a metaphorical representation of their invisible illness and lives lived in the shadow of alienation, social exclusion, controversy and loss of identity.

"If the eye is a mirror in which the other meets her own reflection, then by photographing my subjects with eyes closed I invite the viewer to invest the portraits with their own eyes, and thus see through the eyes of the ME sufferer. By closing their eyes, they ask the viewer to open theirs.

To simply look at something does not mean that you actually 'see' it. So you must look beyond the flat surface to what lies underneath. Do not judge someone with invisible illness by surface appearance, for that is not the truth. Stop, take time and look deeper."
 Juliet Chenery-Robson, 2013

Harry Hall - *The Small Society*



18 Oct - 16 Nov 2013

Lamppost panels, Park Lane/Crowtree Road, Sunderland, SR1 3JU

Artist's Slideshow and Talk: 4 Nov, 5.30 - 7pm, Sunderland Minster. Booking essential, see www.thesocialnepn.co.uk for further details

The work was made with the support of: Blyth All Weather Life Boat; Hadston House; Friends of Jesmond Library; Salvation Army; Southwick Community Project; St Mary's Middle School, Belford; West End Food Bank.

"We're all in this together"

"We need to build a big society"

"Despite the rhetoric of the current government, people are, as they always have been, giving their time, their money, their expertise to help others or to make the organs of society function. Long after the echoes of hollow political rhetoric have been forgotten, the quiet army of volunteers will 'just get on with it'. Why? Because it just needs doing.

This new work is a polemic about the roles individuals and organisations have taken in providing services as local and national government withdraws from civil society. It explores the motivation and experiences of volunteers and charity workers through photographs and quotes. Historically, documentary work concentrates its gaze on those with problems; in this work, the camera is reversed to explore the role of those who give to society. We now rely on this 'third sector' to deliver and finance services that were once considered as public services." Harry Hall, 2013

Karen Ward & Brenda Burrell - The Social in the Social

Photographers Karen Ward and Brenda Burrell will be holding a series of informal photography sharing events at the British Legion Social Club in Silksworth, Sunderland. Members of the local community are invited to bring along their photographs of the Silksworth area and community, and any photographs taken within the club itself to share and discuss. Both historical and contemporary photographs, prints, snaps and mobile phone photographs are of interest.

The project will culminate in the creation of a print based photography wall sited within the club, together with an online gallery of images and the production of a new set of photographs by Karen Ward.

The first event will take place at The British Legion, Silksworth on Wednesday 25th September, from 7pm onwards, with further sessions scheduled for October.

See www.thesocialinthesocial.tumblr.com for more information.



25 Sep - 16 Nov 2013

New Silksworth Royal British Legion Club & Institute Ltd, Vane St, Silksworth, SR3 1HW

www.karenwardphotography.com
www.uneasysurvival.co.uk



Louise Taylor - *Shoot!*

Shoot! is a documentary project developed over 4 years by North East based photographer Louise Taylor. During this time she joined a small pheasant and partridge shooting syndicate in Tow Law, County Durham on both work and shoot days. The shooting season (for pheasant) runs from October - February but creates a unique year round social space as members share the cost and labour of preparing for the season. During the closed season this involves ongoing woodland management and rearing game birds for release.

Participants are extremely diverse, and are drawn from rural and urban areas, young and old, men and women, and people from a diverse range of cultural, educational and occupational backgrounds. Whilst the final objective is to try one's skill in actually shooting 'sporting' game birds, the process constructs a much larger social space for male and female sociability, for passing on traditions and sharing country lore and living practices.

17 Oct 2013 - 12 Jan 2014

Exhibition Preview: 17 Oct 2013, 6 - 8pm

Durham Art Gallery, Aykley Heads, Durham, DH1 5TU

www.louisetaylorphotography.co.uk

Mark Henderson - *The Concert Room: Steels Social Club Residency*



WMCs were once an integral social and cultural institution at the heart of working class communities throughout the UK and in many the Concert Room would be at the fulcrum of the social interaction. When Mark Henderson began to photograph Concert Rooms in clubs in the north east of England, he was initially drawn to their unique aesthetic but soon found an alternative narrative based on the birthdays parties, engagements, weddings, christenings and wakes, as well as numerous other social events, the intimate personal and collective memories of which are contained within the walls of each concert room.

Mark's *Concert Room* project is part of an ongoing exploration into his own social and cultural heritage and as part of the festival he will be developing the themes and ideas in new ways. Some Concert Rooms are impressive affairs comprising a huge stage, a state of the art lighting rig and sound system and enormous dance floors, and while others have retained their original charm, some have sadly fell into disrepair. Ten images from the *Concert Room* series have been reproduced onto a series of beer mats to be used and enjoyed during *The Social*. For a week in November, Mark will also be taking up a residency in the Concert Room of Steels Club, which was established in the 50s and is one of Sunderland's most popular and longest running social clubs. During this time he will explore the social and cultural history of the Concert Room as a unique space for social engagement, looking at the past, present and future uses of the room.

The residency at the Steels Club will take place from Wednesday 6th November until 13th November with a presentation of the findings as a work in progress on the morning of Friday 15th November, in Steels Club concert room.

6 Nov – 13 Nov 2013

Social morning: 15 Nov 2013, 10am

Steels Social Club, 1 Peacock Street West, Sunderland, SR4 6LQ

www.markhenderson.info

Michele Allen - *Forgotten Fruit*

"The kerb is fascinating, maybe it's the height, we spend twenty minutes shuffling up and down in the sun, pulling at the fine blades of grass which grow between the cracks. Picking up stones. Eventually we move on to a grassy mound and climb up and down, investigating the plants growing around the base of a young rowan tree and in the long grass at the periphery of the car park. The boundaries between destination and point of arrival have yet to be learned and curiosity carries us across the tarmac like sprawling weeds. He falls asleep and we walk by the river."
Michele Allen

This new photographic series, documenting fruit growing in urban locations close to where the artist lives, was produced over the course of a year whilst Michele Allen was pregnant and when her son was a small baby. A reflection on how the world shrinks during early motherhood and also an exploration of new perspectives and ways of looking that emerge, Michele created a large collection of images over the year, revisiting trees or particular locations with her son as the seasons changed. The underlying theme was also perhaps an anxiety about where our food comes from and how we might survive on what is to hand.

Such attentive and close inspection of the world on her doorstep reflected something of the shifting perspectives and experiences of place the artist had encountered as a new parent. With this in mind she approached another new mother and asked her to create maps of her daily walks and routines. These maps (made using the application 'map my walk') are exhibited here as short video animations alongside Michele's photographs.



14 Oct 2013 - 4 Jan 2014

Opening times: Mon, Fri 9.30am - 5pm / Tue, Thu 9.30am - 10pm / Wed 9.30am - 8pm / Sat 9.30am - late

Photographer Talk and special viewing:
24 Oct 2013, 6 - 8pm
All welcome, booking not required.

Arts Centre Washington,
Biddick Lane, Fatfield,
Washington, NE38 8AB
www.artscenrewashington.co.uk

www.michele-allen.co.uk

The exhibition is supported by Arts Council England through Grants for the Arts, and Northern Centre of Photography.

Peter Fryer & David Campbell - *Laygate Stories*



Laygate Stories is a multimedia project that portrays, in their own voices, the lives of those living and working in the Laygate area of South Shields on Tyneside, in the north-east of England. It is produced by Peter Fryer and David Campbell, and is part of an Arts Council England funded commission - *Homelands* - organised by the Side Gallery in Newcastle.

The work is centred on the diverse community along Frederick St and the Laygate area. This is a vibrant area made up of indigenous north-easterners, a long established Yemeni community – who were once migrants but now includes second and third generation British citizens – as well as people from Angola, Bangladesh, the Congo, Iran, Jordan, Palestine, Poland and Somalia. Through existing contacts and friendships within the community, Fryer and Campbell are documenting the daily interactions of the different social groups that constitute this community. The work does not profess to be an all encompassing overview of the area but uses short photo-films to give people a platform to express their everyday thoughts, feelings and concerns, and to reflect on their place within the community. In endeavouring to show the everyday, Fryer and Campbell believe that this gives an insight into the extraordinary things people have to offer and the different histories they have to tell. They have also ensured that those who volunteered to speak are involved in the way their stories are produced.

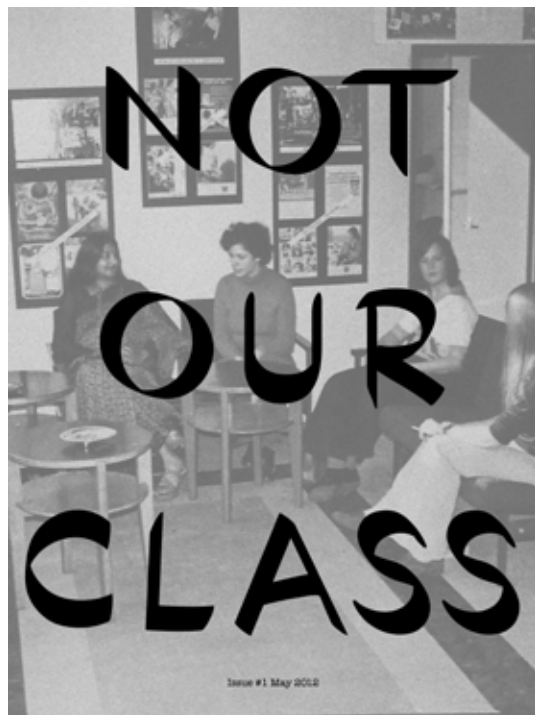
The project is a work in progress. Currently it comprises eight stories, the aim being to add more from this diverse community as the work develops.

18 Oct - 16 Nov 2013

Photographic installation at Newcastle Central Metro Station, Newcastle upon Tyne

www.laygatestories.com

The Social Seminar



'Nobody told us about it': Socialising photo-history

8 Nov 2013, 1.30 - 5pm

Tickets: £10 / £5 concessions, booking required via www.thesocialnepn.co.uk

Northern Gallery for Contemporary Art, City Library and Arts Centre, Fawcett Street, Sunderland, SR1 1RE www.ngca.co.uk

Panel discussion convened by Laura Guy, PhD Candidate, Manchester School of Art with support from NEPN.

This seminar invites speakers and audience to engage with the cultural legacy of the British photography practices, organisations and collectives who aligned themselves with left political movements throughout the 1960s, 70s and 80s. The event responds to the issues that Terry Dennett and Jo Spence characterised in their 1986 account of the Photography Workshop:

"One of the ironies of the Left and women's movement must surely be this: that groups which are set up and do innovative work usually split into differing political segments; these segments then go on and found new dynasties, or just fade away. In time, the original differences, cracks, fissures and explosions come to be neatly laundered over, erased from the memory of those

involved because they are too painful, not fully known to those who came later because 'nobody told us about it' and, finally, mythologised through the accounts of others writing about them from the outside."

Bringing together a range of individuals who are attempting to do photo-history 'from the outside' (interpretable in the broadest sense), we hope this event will share a number of methodological approaches with a focus on the histories of regional as well as London based practices.

The Social Reviews

Portfolio Reviews provide opportunities for practicing photographers to receive critique, guidance and crucial support in navigating the world of professional practice, covering a range of contexts including exhibiting, publishing and engaging the public in your work.

Booking is required for both events, please find more details on the website. £15 per 30 minute review.

Portfolio Review event with curators Alistair Robinson, Alexander Supartono and photographic artist Ingrid Pollard

Tue 22 Oct 2013

Northern Centre of Photography, University of Sunderland, Chester Road, Sunderland, SR1 3SD

Booking required, more details available via www.thesocialnepn.co.uk

Portfolio Review event with publisher and curator Taj Forer (Daylight NY), photographic artists Marjolaine Ryley and Sarah Pickering

Sat 9 Nov 2013, 3 - 5pm

The NewBridge Project, 18 New Bridge Street West, Newcastle upon Tyne, NE1 8AW www.thenewbridgeproject.com

Booking required, more details available via www.thesocialnepn.co.uk

The Social Slideshow Evenings



Wideyed Periskop

1 Nov 2013, 6.30 - 10pm

Sunderland Minster, High Street West, Sunderland SR1 3ET www.sunderlandminster.org

Free but booking essential, more details available via www.thesocialnepn.co.uk

At the invitation of Wideyed, Periskop brings to Sunderland a taste of the 'Balkan Periskop experience,' an evening of slideshows on the theme of 'the social'.

Taking place at Sunderland Minister, the two collectives have worked together to produce an event that combines projections of slideshows curated from Periskop's impressive back catalogue with those of UK based photographers selected from an open call. Join us for a lively evening of photography, peanuts and 12% proof spirited debate in the pews of Sunderland Minster.

Wideyed is an independent artist-led collective dedicated to creating, curating and promoting compelling contemporary photography for exhibition and cross-media publication. www.wideyed.org

Balkan Periskop was created in February 2012 with the aim of organising cultural events that build bridges across the Balkan region through photography and to raise the profile of contemporary Balkan photographers internationally. www.facebook.com/periskop.foto

Social Networking (Old School Style!)

14 Nov 2013, 7 - 9pm

Independent, 27 - 28 Holmeside, Sunderland, SR1 3JE www.independentsunderland.com

FREE event, no booking required

Join us for an informal social in the pub including viewing work from international photography festivals.

'What does my Sunderland look like?'

29 Oct - 16 Nov 2013

The Bridges Shopping Centre, Crowtree Road, Sunderland, SR1 3JU

Using mobile phones and digital cameras, 'What does my Sunderland look like?' seeks to represent the experience and encourage the creativity of young people exploring the city in which they live. Sharing images via social media to gather a collective online album and future archive of Sunderland in 2013, the photographs will also have an off-line presentation during *The Social* and become part of the rich mix of photography on display in the City.

Family Activities

Camera Obscura

28 Oct 2013, 11am - 3pm

Come and enjoy the magic of the Camera Obscura in Mowbray Park. The camera obscura ('darkened room') is a technological ancestor of photography. Portable camera obscuras were often used by artists as an aid to drawing. In Victorian times, much larger public camera obscuras became popular attractions and some of this attraction continues today. Bring your digital camera or mobile phone to record what you can spy from inside our camera obscura!

Please note that this is an outdoor activity, weather permitting.

The Camera Obscura is kindly loaned by VARC and photographer Ingrid Pollard, supported by Northumberland National Park Authority's Sustainable Development Fund.

Pop-up Photostudios and other free family activities

During half-term week, 28th October - 1st November there are plenty of family photography activities at Sunderland Museum & Winter Gardens and Northern Gallery for Contemporary Art including a 'zombie booth' especially for Halloween. Drop in, no need to book!

Sunderland Museum & Winter Gardens:

26 Oct - 3 Nov 2013

Snap Happy Backpacks

Borrow a backpack full of fun photography themed activities for families. Collect your backpack from the Art Gallery on Level 2 (a refundable deposit is required).

30 Oct

Spooky Pictures

11am - 12.30pm & 1.30 - 3pm (drop in)

Make spooky landscapes and portraits using light reactive paper and join in our scary shadow puppet show.

For more information please contact the Learning Team on [0191 553 2323](tel:01915532323) or e-mail learning@sunderlandmuseum.org.uk

Sunderland Museum & Winter Gardens, Burdon Road, Sunderland, SR1 1PP

Northern Gallery for Contemporary Art:

Tue 29 and Thur 31 Oct 2013, 10am - 4pm

Pop-up photo studio

Dress up, make props and pose for our photographers

in our temporary photo studio booth. Northern Gallery for Contemporary Art will be converting their activity space into a pop-up photo studio for 2 days during the October half term holidays. Drop in to pose for a family portrait, our photography team will assist you in creating your look and making props.

On Thursday 31st October the photo studio will have a spooky make-over for Halloween. Dress up in your best Halloween costume, make some gory props and pose for our ghoulish photographers.

With photographers Nicola Maxwell and Mike Davidson. For more information please contact the Education Officer on [0191 561 1235](tel:01915611235) or email ngca@sunderland.gov.uk

Northern Gallery for Contemporary Art, City Library and Arts Centre, Fawcett Street, Sunderland, SR1 1RE
www.ngca.co.uk

Teachers Tour of *You Are The Company In Which You Keep*

Sat 19 Oct 2013, 10am - 1pm

Northern Gallery for Contemporary Art and Sunderland Museum & Winter Gardens are offering a special Teachers Tour of the twin-sited exhibition *You are the Company in Which You Keep*.

To book please email learning@sunderlandmuseum.org.uk

Schools workshops are also available during the exhibition period.

Walking Tours

Sunderland Walking Tours, all welcome. Tours start at the foyer of Sunderland Museum and will visit open-air artworks in the City Centre.

19 Oct 2013, 11am - 1pm

With Simon Roberts and artists from *The Social* exhibiting photographers

26 Oct 2013, 11am - 1pm

9 Nov 2013, 11am - 1pm

Partner Exhibitions & Events

Damien Wootten - *Coastal Retreats*



12 Oct 2013 - 2 Feb 2014

Opening times:

Wed to Sun 10am - 4pm

Exhibition Preview: Sat 26 Oct 2013, 12 - 1pm

Artists Talk: 'Walking Tour' of the exhibition by the artist: Sat 9 Nov, 2pm - 3pm. To reserve a place for this event please email generalenquiries@woodhorn.org.uk or call [01670 624455](tel:01670624455).

West Gallery at Woodhorn Museum and Northumberland Archives, QEII Country Park, Ashington, Northumberland, NE63 9YF

Supported by Arts Council England through Grants for the arts.

In 2006, Damien Wootten began to take photographs, using colour film, along the coastline of the north east. It is an area that he had previously photographed in black & white during the late 1980's and early 1990's - inspired by the work of the British landscape photographer Raymond Moore.

Over the past 7 years Wootten has revisited and re-photographed very specific locations on this coast. The majority of the images that make up this exhibition were taken in and around Newbiggin-by-the-Sea, which lies about a mile away from Woodhorn Museum.

Edition - Produced by students at the Northern Centre of Photography



A special installation to celebrate the launch of the new student photography magazine *Edition* at Sunderland's newest venue!

The brainchild of Frankie & The Heartstrings, *Pop Recs Ltd* is an all encompassing exhibition, performance and social space. Local and national artists and musicians alike are the prime focus to *Pop Recs Ltd*, with the aim to bring vibrancy, creativity and a real sense of community to the North East.

Opening event: 18 Oct 2013, 5 - 7pm

Opening times: 10am - 5pm daily

Pop Recs Ltd, 51 Fawcett Street, Sunderland, SR1 1RS
www.poprecsltd.com

Refocus - Castlegate mima Photography Prize

Open from 18 Oct 2013

The *Castlegate mima Photography Prize* is the result of a collaboration between *mima* and *Castlegate Shopping Centre* and is supported by *Stockton Borough Council*. NEPN is delighted to be an event associate

Artist Gayle Chong Kwan has been commissioned to launch a new large-scale biennial photography prize in Stockton-on-Tees. Following a period of local historical research and engagement with residents of Stockton and the surrounding area, Chong Kwan has created a new landmark, *Arripare*. The work is a mythical island seemingly hovering between arrival and appearance or departure or disappearance. Combining complex multiple techniques of documentary photography, collage and sculptural construction, the island is rooted in the context and history of its location and the river which runs alongside it, and yet enveloped in mist, the island could be located in the past, present or future, sighted in the midst of a vast ocean or be hovering somewhere in the clouds.

The image is located on the back of the *Castlegate Shopping Centre* - head to the Millennium Footbridge (accessed via the shopping centre) for a great view of the work. www.castlegateshoppingcentre.com/your-castlegate

Gayle Chang Kwan will give an artists' talk during *The Social*. Further details available at www.thesocialnepn.co.uk

Taking Interest

25 - 26 Oct 2013

Opening times:
Fri 6 - 9pm / Sat 12 - 6pm

Ouse Street Arts Club, 20 Ouse Street, Newcastle upon Tyne, NE1 2PF
www.ousestreetartsclub.wordpress.com

Taking Interest welcomes anyone and everyone to discover the creative insight of young minds on the Autistic Spectrum. The project is the initiative of photographer Anne Douglass. In collaboration with the National Autistic Society, Anne was able to work with young people to give them the opportunity to photograph their own interests and share their unique outlook with a public audience. Anne explains: "Being on the Autistic Spectrum myself, this project is very dear to me and working with the kids has been inspiring and we've also had some fun along the way. The children are very excited about the exhibition and looking forward to seeing their work."

This exhibition of work made during the project will be shown at the Ouse Street Arts Club in Newcastle for two nights. The work will also be showcased on-line at www.insitegallery.com. Programmed by Anne Douglass.

Artist Talk: Melanie Manchot

23 Oct 2013, 2pm

Northumbria University, Lipman Building, Newcastle upon Tyne
www.northumbria.ac.uk

Booking essential, please visit www.greatnorthrunculture.org

Programmed by Great North Run Culture in partnership with NEPN and Northumbria University.

Melanie Manchot talks about her work, including making her Great North Run Moving Image Commission film *Tracer*.

Made in Sunderland



18 Oct - 16 Nov 2013

Creative Cohesion @ Nile Street Studios, 20 - 21 Nile Street, Sunnyside, Sunderland, SR1 1EY www.creativecohesion.org.uk

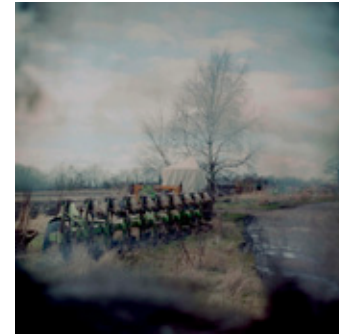
Programmed by Creative Cohesion with support from NEPN.

Presenting the work of Sunderland-based photographers including Roger Coulam and Andy Martin.

Roger Coulam's documentary work *Burgers and B52s* explores the communities that gather at one of the country's largest airshows and one of the largest annual social events on Wearside, Sunderland Airshow. Andy Martin aka *This Is Sunderland*, exhibits a series of beautifully crafted tintypes made using the Victorian wet collodion process, of Sunderland landscapes and residents.

Images: Andy Martin, *River Wear-Tintype* / Roger Coulam, from *Burgers and B52s*

Merge



New works by Claire Cooper, Yvonne Davies, Yuk Lee, Walter Lewis, Jacky Longstaff, Emanuela Marenz

28 Oct - 12 Nov 2013

Reception event: 1 Nov, 5 - 7pm

Design Centre Gallery, University of Sunderland, Chester Road Sunderland, SR1 3SD
www.sunderland.ac.uk

www.mimeses-north.eu

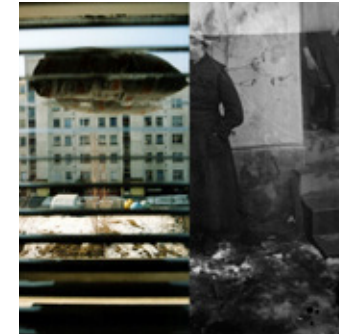
Developed with support from NEPN.

Mimeses North is a newly formed collective of emerging photographers from across the north of England held together by a common philosophy through which all are motivated by concern for the welfare of mankind and the sustainability of environment and resources. All seek to imbue their work with a sense of awe or beauty alongside critical engagement with social and cultural issues.

The works in this exhibition are individual explorations of place, home and history, each a distinctive personal reflection on contemporary living.

Programmed by Mimeses North.

Ordinary Fictions



Zuzana Hruskova and Marek Šulík in conversation with Elisabetta Fabrizi

21 Oct 2013, 6 - 8pm

ISIS Arts, First floor, 5 Charlotte Square, Newcastle upon Tyne, NE1 4XF
www.isisarts.org.uk

Supported by Arts Council England and Bridge+Tunnel.

An artists' talk at ISIS Arts focusing an exhibition by Zuzana Hruskova – a Slovakian artist based in Newcastle – and Marek Šulík, a documentary maker based in Vištuk, Slovakia. Curated by Elisabetta Fabrizi, the collaborative exhibition takes place at the Slovak Embassy, London from 17th October -14th November 2013. The project revolves around the idea of everyday-related fictions, expressed through individual places, people and scenarios, whilst using photography as the main communicator.

The artists first worked together on the *Homelands* project with ISIS Arts in 2010.

Five Photographers



Kevin Dowling, Elaine Vizzor, Brenda Burrell, Karen Ward, Somjade Janmanee

21 Oct - 1 Nov 2013

Opening times:
Mon - Fri 10am - 4pm

Preview Event:
18 Oct 2013, 5 - 7pm

The Showcase Gallery, Priestman Building, University of Sunderland, Sunderland, SR1 3SD
www.sunderland.ac.uk

The 2013 MA Photography cohort is a small but dynamic group of fine art photographers. The diverse interests of group members range from the domestic to the existential, from portraiture to Jung, from the back street to the back of the mind.

Hi there. We are The Rip.

We do large format digital printing for pretty much any application you can think up.

We produce and install a wide range of exhibition and display graphics for museums, corporate companies, councils, event companies, design agencies and many other organisations as well as individuals and students.



- ▶ Street Graphics
- ▶ Events and Exhibition
- ▶ Retail Graphics
- ▶ Museum Displays
- ▶ Vehicle Graphics
- ▶ The Arts
- ▶ Building Services & Interior Design
- ▶ Portable Display Systems

The Rip

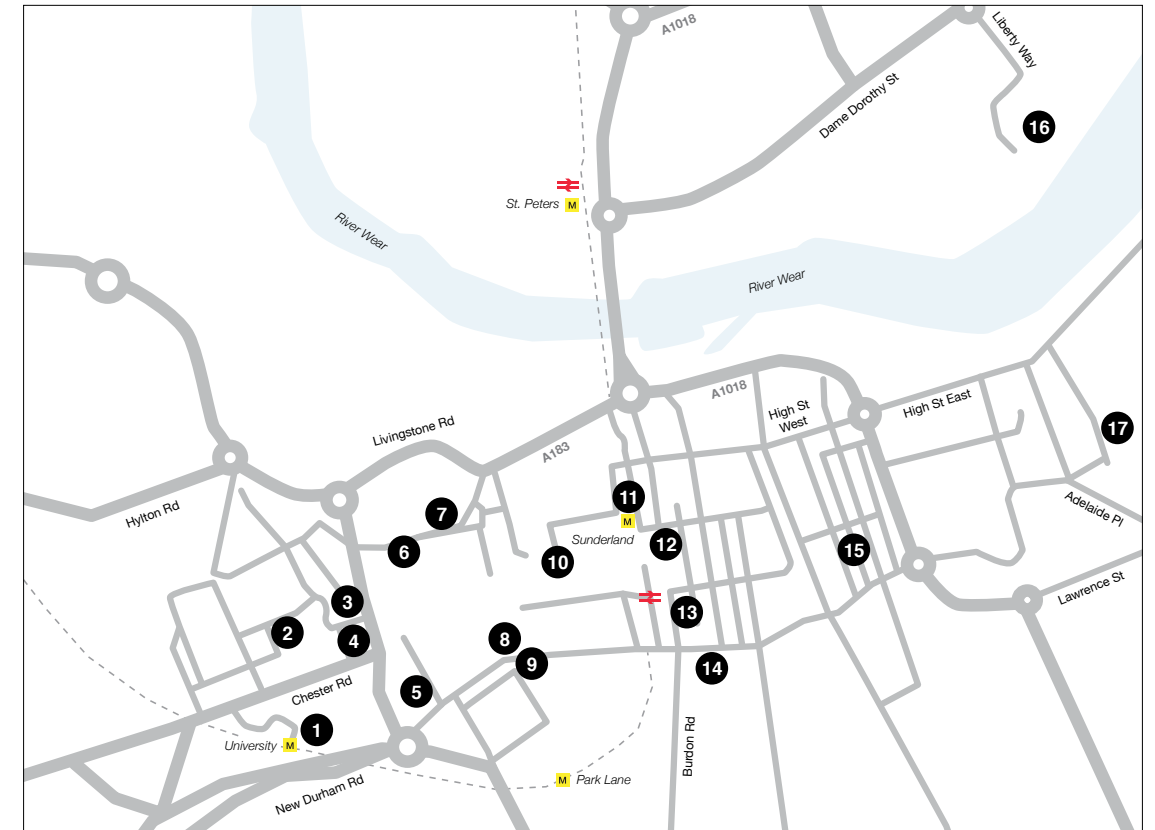
LARGE FORMAT DIGITAL DISPLAY PRINT

3 Hawick Crescent Industrial Estate
Newcastle NE6 1AS

0191 224 0123
digital@therip.co.uk
www.therip.co.uk

Sunderland Map

For full city maps please visit www.thesocialnepn.co.uk



1) University Metro Station, New Durham Road, Ashbrooke, Sunderland, SR2 7AA

• Ananda van der Pluijm - *Martin*, p.17

2) Sunderland University Travel Hub (W-bound), Wharnclyffe St, Sunderland, SR1

• Ananda van der Pluijm - *Martin*, p.17

3) Design Centre Gallery, University of Sunderland, Sunderland, SR1 3SD

• Merge, p.29

4) Northern Centre of Photography, Faculty of Arts, Design & Media, University of Sunderland, Chester Road, Sunderland, SR1 3SD

5) Priestman Gallery, University of Sunderland, First floor, Priestman Building, Green Terrace, Sunderland, SR1 3PZ

• Shahidul Alam and Saydia Gulrukh - *Searching for*

Kalpana Chakma: A Photo-Forensic Study, p.11
• Five Photographers, p.29

6) Sunderland Minster, High Street West, Sunderland, SR1 3ET

• Ingrid Pollard - *Regarding the Frame*, p.13
• Marjolaine Ryley - *Growing up in the New Age*, p.13
• Wideyed Periskop, p.25
• Harry Hall - *The Small Society* (Artist's Slideshow and Talk), p.20

7) The Old Fire Station, Dun Cow Street, Sunderland, SR1 3HA

• Juliet Chenery-Robson - *Portraits of a Postmodern Illness*, p.21

8) The Bridges Carpark Rotunda / The Bridges Shopping Centre, Crowtree Road, Sunderland, SR1 3JU

• Arabella Plouviez - *Connected*, p.16

9) Lamppost panels, Park Lane/Crowtree Road, Sunderland, SR1 3JU

• Harry Hall - *The Small Society*, p.20

10) The Bridges, Market Square, Sunderland, SR1 3DR

• Simon Roberts - *The Social: landscapes of leisure*, p.4
• Arabella Plouviez - *Connected*, p.16

11) Sunderland Metro Station

• Arabella Plouviez - *Virus*, p.16

12) Pop Recs Ltd, 51 Fawcett Street, Sunderland, SR1 1RS

• Edition, p.27
• Irwan Ahmett and Tita Salina - *Deleting Memory*, p.9

13) Northern Gallery for Contemporary Art, City Library and Arts Centre, Fawcett Street, Sunderland, SR1 1RE

• You Are the Company in Which You Keep, p.10
• The (Post) Colonial Photo Studio II, p.11
• 'Nobody told us about it': Socialising photo-history, p.24

14) Sunderland Museum & Winter Gardens Burdon Road, Sunderland, SR1 1PP

• You Are the Company in Which You Keep, p.10
• Simon Roberts - *The Social: Landscapes of leisure* (external Installation), p.4

15) Creative Cohesion @ Nile Street Studios, 20 - 21 Nile Street, Sunnyside, Sunderland, SR1 1EY
• Made in Sunderland, p.28

16) National Glass Centre, Liberty Way, Sunderland, SR6 0GL

• John Kippin - *Ships That Pass*, p.6

17) The Canny Space at Holy Trinity Church, Church Street East, Sunderland SR1 2BB

• Damien Wootten - *Waterside: East Sunderland Photographic Residency*, p.12



© Simon Roberts, Penshaw Monument, Penshaw, July 2013 from *The Social: landscapes of leisure*

For more information visit: www.thesocialnepn.co.uk @TheSocialNEPN



**University of
Sunderland**

**Northern Gallery for
Contemporary Art.**



Supported using public funding by
**ARTS COUNCIL
ENGLAND**